

.0 NATURAL

underlying pigments: yellow | green

lifting action: max 4 levels
pH Peroxide 20vol.-6% | 30vol.-9%

mixing ratio: 1:1.5
guidelines



8.0 9.0 10.0



.71 COLD BEIGE

underlying pigments: green | yellow

lifting action: max 4 levels
pH Peroxide 20vol.-6% | 30vol.-9%

mixing ratio: 1:1.5
guidelines

5.71 6.71 7.71 8.71 9.71 10.71



.17 ARCTIC

underlying pigments: green

lifting action: max 4 levels
pH Peroxide 20vol.-6% | 30vol.-9%

mixing ratio: 1:1.5
guidelines

6.17 8.17 10.17



.1 ASH

underlying pigments: blue

lifting action: max 4 levels
pH Peroxide 20vol.-6% | 30vol.-9%

mixing ratio: 1:1.5
guidelines

1.10 5.1 6.1 7.1 8.1 9.1 10.1



.72 COLD BROWN

underlying pigments: blue | violet

lifting action: max 4 levels
pH Peroxide 20vol.-6% | 30vol.-9%

mixing ratio: 1:1.5
guidelines

6.72 8.72 10.72



cold.0 COLD NATURAL

underlying pigments: yellow | green | blue

lifting action: max 4 levels
pH Peroxide 20vol.-6% | 30vol.-9%

mixing ratio: 1:1.5
guidelines

55.0 66.0 77.0 88.0 99.0



.12 PEARL

underlying pigments: violet

lifting action: max 4 levels
pH Peroxide 20vol.-6% | 30vol.-9%

mixing ratio: 1:1.5
guidelines

6.12 8.12 10.12



.08 NATURAL PEARL

underlying pigments: violet

lifting action: max 4 levels
pH Peroxide 20vol.-6% | 30vol.-9%

mixing ratio: 1:1.5
guidelines

6.08 8.08 10.08



.35 WARM BROWN

underlying pigments: yellow | orange

lifting action: max 4 levels
pH Peroxide 20vol.-6% | 30vol.-9%

mixing ratio: 1:1.5
guidelines

3.35 4.35 5.35 6.35 7.35 8.35 9.35



.3 GOLDEN

underlying pigments yellow
 lifting action: max 4 levels
 mixing ratio: 1:1.5
 pH Peroxide 20vol.-9% | 30vol.-9%
 guidelines



.4 | .44 COPPER | INTENSE COPPER

underlying pigments orange
 lifting action: max 4 levels
 mixing ratio: 1:1.5
 pH Peroxide 20vol.-9% | 30vol.-9%
 guidelines



.66 RED

underlying pigments red
 lifting action: max 4 levels
 mixing ratio: 1:1.5
 pH Peroxide 20vol.-9% | 30vol.-9%
 guidelines



.55 MAHOGANY

underlying pigments red | violet
 lifting action: max 4 levels
 mixing ratio: 1:1.5
 pH Peroxide 20vol.-9% | 30vol.-9%
 guidelines



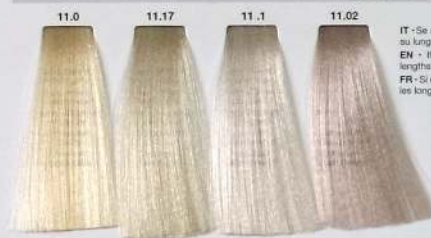
.2 VIOLET

underlying pigments red | violet
 lifting action: max 4 levels
 mixing ratio: 1:1.5
 pH Peroxide 20vol.-9% | 30vol.-9%
 guidelines



SUPER LIGHTENER

lifting action: max 5 levels
 mixing ratio: 1:2
 pH Peroxide 30vol.-9% | 40vol.-12%
 60'



IT - Se necessario, dopo il tempo di posa, massaggiare il colore su lunghezza e punte lasciandolo qualche minuto in posa.
 EN - If necessary, after processing time, massage color on lengths and ends processing for a few minutes.
 FR - Si nécessaire, après le temps de pose, masser la couleur sur les longueurs et les pointes et laisser poser quelques minutes.

BOOSTER

lifting action: 5-6 levels
 Mix with SUPER LIGHTENER



IT - Il Booster è un super schiarente privo di pigmenti. Potenzia la schiaritura di 1 livello aumentando l'altezza di tono. Usare 1/2 di Booster su 50g Superlightener miscelato in rapporto 1:2 con pH Peroxide 30vol.-9% | 40vol.-12%.
 EN - Booster is a pigment-free super lightener. It enhances lifts by 1 level of tone height. Use 1/2 of Booster on 50g Superlightener mixed in the ratio 1:2 with pH Peroxide 30vol.-9% | 40vol.-12%.
 FR - Booster est un super éclaircissant sans pigments. Il améliore la décoloration de 1 ton augmentant le niveau du ton. Utiliser 1/2 de Booster sur 50g de Super Lightener mélangé dans le rapport 1:2 avec pH Peroxide 30vol.-9% | 40vol.-12%.
 e.g.: Booster 12.25g + Super Lightener 50g + 125g Peroxide

TONER

mixing ratio: 1:2
 pH Peroxide 1vol.-1.5% | 10vol.-3%



IT - Colori tonalizzanti. Usati dopo un servizio di decolorazione neutralizzano gli indesiderati riflessi. Applicare su capelli lavati e tamponati.
 EN - Toning colors. Used after a bleaching service, they neutralize unwanted reflexes. Apply to washed and towel-dried hair.
 FR - Toners. Utilisés après un traitement de décoloration, ils neutralisent les reflets indésirables. Appliquer sur cheveux lavés et essorés.

PURE PIGMENTS



IT - Serie di pigmenti puri senza ammoniaca in grado di ripigmentare, intensificare e neutralizzare. EN - Series of pure pigments without ammonia for repigmenting, intensifying and neutralizing. FR - Série de pigments purs sans ammoniacque pour repigmenter, intensifier et neutraliser.

Ripigmentare: Su capelli asciutti / On dry hair / Sur cheveux secs
 Intensificare: Ripigmentare / Dry / Sécher
 Intensifier: Controllare a vista / Check visually / Contrôler à vue
 Ripigmenter: Sciacquare & lavare / Rinse & wash / Rincer & laver
 Intensifier: Applicare il colore desiderato / Apply desired color / Appliquer la couleur désirée

Intensificare: mix 1:1 Pure Pigment 1-20g* + pH Color 50g + Peroxide 50g
 Intensifier: mix 1:1.5 Pure Pigment 1-30g* + pH Color 50g + Peroxide 75g
 Intensifier: mix 1:2 Pure Pigment 1-20g* + pH Color 50g + Peroxide 100g
 * On Level → Pure Pigments
 1-6 → max 20g Pure Pigment
 7-10 → max 2g Pure Pigment

Neutralizzare: red - orange
 Neutralizer: orange - yellow
 Neutralizer: green
 applicando alla miscela 1-20g* di add to the mix 1-20g* or ajouter au mélange 1-20g* de
 Pure Green - Pure Blue
 Pure Blue - Pure Violet
 Pure Red
 * On Level → Pure Pigments
 1-6 → max 20g Pure Pigment
 7-10 → max 2g Pure Pigment

ICING SUGAR • WHITE

ICING SUGAR • WHITE
Icing Sugar • White è un colore neutro da miscelare con le altre nuance Lollipop Color nella quantità desiderata per ottenere tonalità più chiare.

EN. Icing Sugar • White is a neutral colour to be mixed with other Lollipop Color nuances in the desired quantities to obtain lighter tones.

FR. Icing Sugar • White est une couleur neutre à mélanger avec les autres nuances Lollipop Color avec la quantité souhaitée pour obtenir une tonalité plus claire.

DE. Icing Sugar • White ist eine neutrale Farbe, um mit anderen Lollipop Color in den gewünschten Mengen gemischt zu werden, um leichtere Töne zu erhalten.



ES. Icing Sugar • White es un color neutro para mezclar con las otras tonalidades Lollipop Color en la cantidad deseada para obtener tonos más claros.

PT. Icing Sugar • White é uma cor neutra para ser misturada com as outras cores Lollipop Color na quantidade desejada para obter tonalidades mais claras.

NL. Icing Sugar • White is de neutrale kleur om te mengen met andere tinten Lollipop Color om met verschillende hoeveelheden te komen tot een helder kleureffect.

MARSHMALLOW • PEARL



⌚ 20 MIN.



⌚ 5-10 MIN.



+ ICING SUGAR • WHITE

SWEET COAL • GREY



⌚ 20 MIN.



⌚ 5-10 MIN.



+ ICING SUGAR • WHITE

CANDIED PAPAYA • BLORANGE



⌚ 20 MIN.



⌚ 5-10 MIN.



+ ICING SUGAR • WHITE

CANDY FLOSS • PINK



⌚ 20 MIN.



⌚ 5-10 MIN.



+ ICING SUGAR • WHITE

SUGAR PLUM DROPS • VIOLET



⌚ 20 MIN.



⌚ 5-10 MIN.



+ ICING SUGAR • WHITE

SMURF JELLY • BLUE



⌚ 20 MIN.



⌚ 5-10 MIN.



+ ICING SUGAR • WHITE