

**.0 | NATURAL**

mixing ratio 1:1.5



**.00 | INTENSE NATURAL**

mixing ratio 1:1.5



**.01 | NATURAL ASH**

mixing ratio 1:1.5



**.08 | NATURAL PEARL**

mixing ratio 1:1.5



**.32 | BEIGE GOLD VIOLET**

mixing ratio 1:1.5



**.1 | ASH**

mixing ratio 1:1.5



**.31 | SAND GOLD ASH**

mixing ratio 1:1.5



**.41 | TOBACCO COPPER ASH**

mixing ratio 1:1,5



**.48 | CHOCOLATE COPPER PEARL**

mixing ratio 1:1,5



**.82 | COLD CHOCOLATE PEARL VIOLET**

mixing ratio 1:1,5



**.3 | GOLD**

mixing ratio 1:1,5



**.34 | GOLD COPPER**

mixing ratio 1:1,5



**.4 | COPPER**

mixing ratio 1:1,5



**.43 | COPPER GOLD**

mixing ratio 1:1,5



**.6 | RED**

mixing ratio 1:1,5



**.5 | MAHOGANY**

mixing ratio 1:1,5



**.22 | VIOLET**

mixing ratio 1:1,5



**.81 | SILVER**

mixing ratio 1:1,5

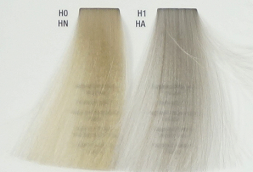


## H | HIGH LIFT

mixing ratio 1:3

H0  
HN

H1  
HA



## SH | STRONG HIGH LIFT

mixing ratio 1:3

SH1  
SHA

SH81  
SHS



## BOOSTER

same mixing ratio as the  
nuance it is added to



## T | TONER

mixing ratio 1:2

T81  
TS

T21  
TVA



## K | CONTRAST

mixing ratio 1:1,5

K6  
KR

K4  
KC



## C | CORRECTOR

same mixing ratio as the  
nuance it is added to

C1  
CA



## I | INTENSIFIER

same mixing ratio as the  
nuance it is added to

I6  
IR



# VIRTUOUS COLOUR

JOJOBA OIL AND ORGANIC GREEN TEA LEAVES

